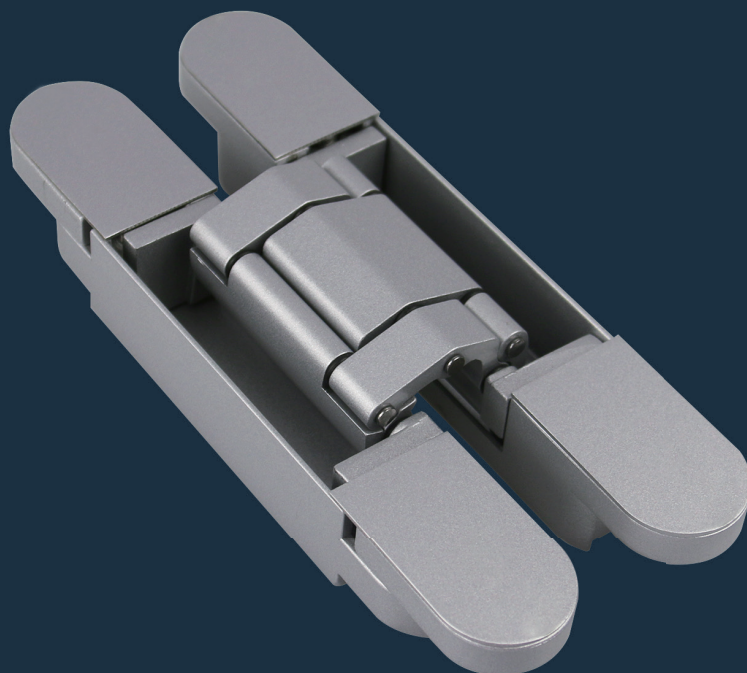


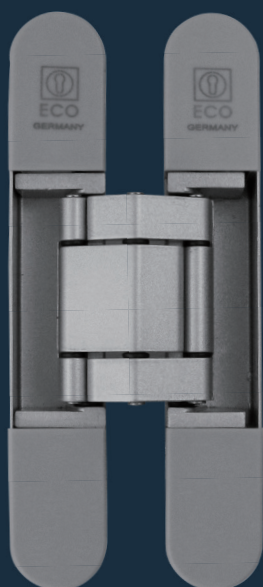
# 3D Adjustable Concealed Hinges



■ SYSTEM TECHNOLOGY FOR THE DOOR



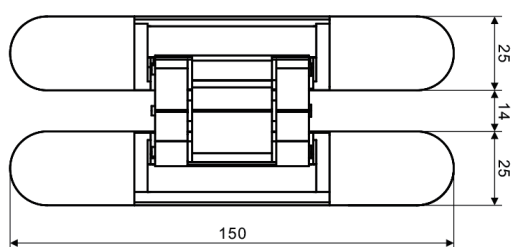
## OBC-25-1440/150Z-3D



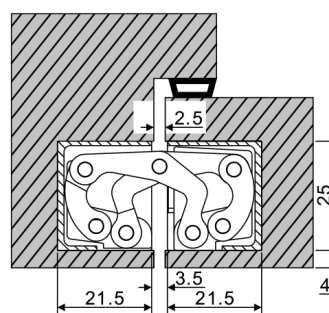
| Product characteristics |                | OBC-25-1440/150Z-3D       |
|-------------------------|----------------|---------------------------|
| Size                    |                | 150 mm                    |
| Screws                  |                | M5                        |
| Min. door thickness     |                | 35 mm                     |
| Max. opening angle      |                | 180°                      |
| DIN left / DIN right    |                | ■                         |
| Door types              | Rebated        | -                         |
|                         | Unrebated      | ■                         |
|                         | Wood           | ■                         |
|                         | Steel          | -                         |
| Loading capacity        | Alu profile    | -                         |
|                         |                | 50 kg / 3 pcs             |
| Finishes                |                | Stainless steel looking ■ |
| Material                | Base           | Zinc alloy                |
|                         | Connector      | Aluminum alloy            |
| 3D adjustable range     | Up and down    | ±3 mm                     |
|                         | Left and right | ±2 mm                     |
|                         | Front and back | ±1 mm                     |

■ Yes    - No    □ On request

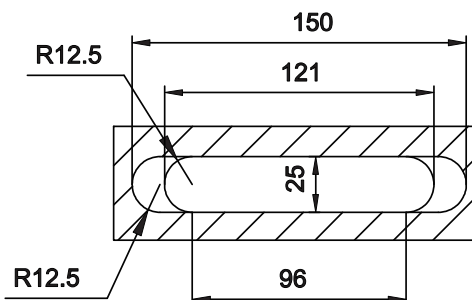
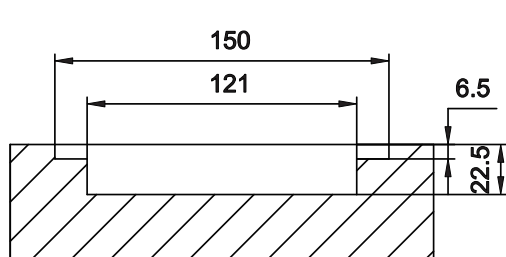
Dimension drawing



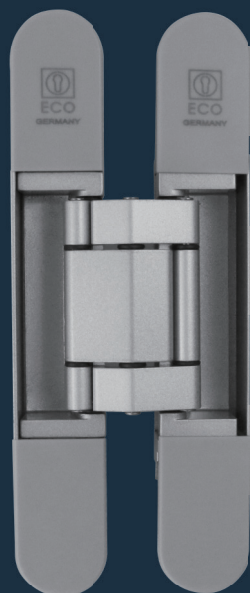
Mounting drawing



Trepanning drawing



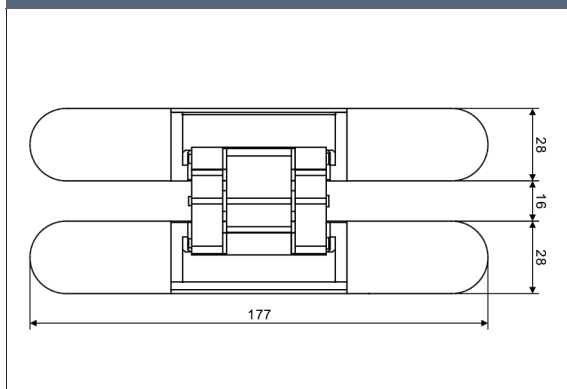
## OBC-28-1640/177Z-3D



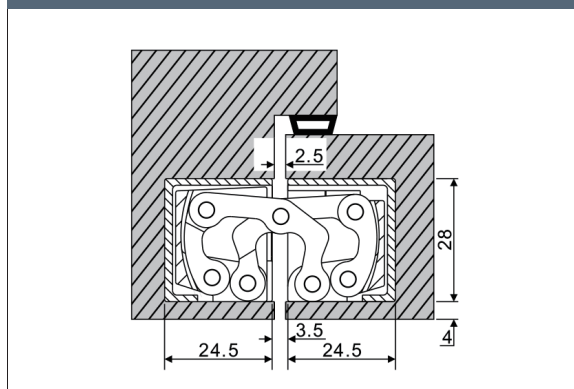
| Product characteristics |                | OBC-28-1640/177Z-3D       |
|-------------------------|----------------|---------------------------|
| Size                    |                | 177 mm                    |
| Screws                  |                | M5                        |
| Min. door thickness     |                | 40 mm                     |
| Max. opening angle      |                | 180°                      |
| DIN left / DIN right    |                | ■                         |
| Door types              | Rebated        | -                         |
|                         | Unrebated      | ■                         |
|                         | Wood           | ■                         |
|                         | Steel          | -                         |
| Loading capacity        | Alu profile    | -                         |
|                         |                | 95 kg / 3 pcs             |
| Finishes                |                | Stainless steel looking ■ |
| Material                | Base           | Zinc alloy                |
|                         | Connector      | Aluminum alloy            |
| 3D adjustable range     | Up and down    | ±3 mm                     |
|                         | Left and right | ±2 mm                     |
|                         | Front and back | ±1 mm                     |

■ Yes   - No   □ On request

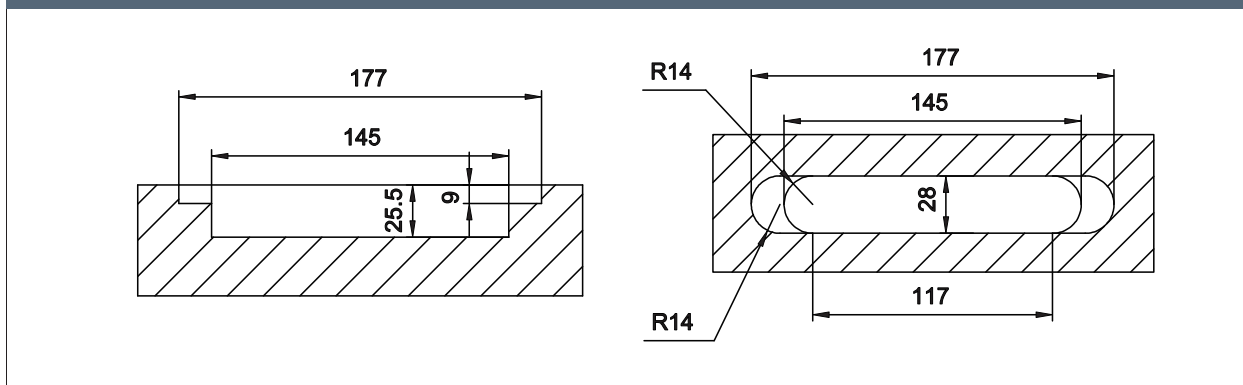
Dimension drawing



Mounting drawing



Trepanning drawing



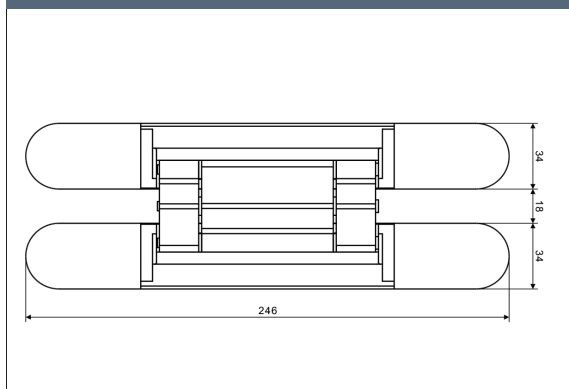
## OBC-34-1845/246Z-3D



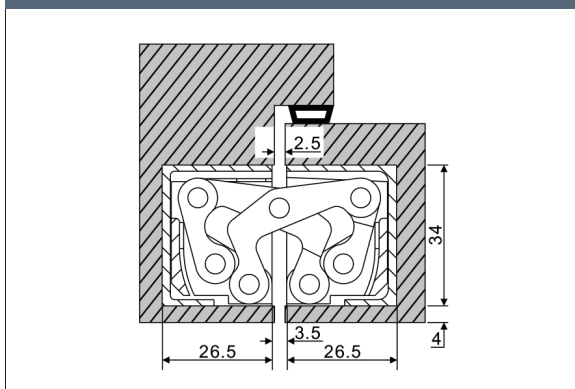
| Product characteristics |                | OBC-34-1845/246Z-3D       |
|-------------------------|----------------|---------------------------|
| Size                    |                | 246 mm                    |
| Screws                  |                | M5                        |
| Min. door thickness     |                | 45 mm                     |
| Max. opening angle      |                | 180°                      |
| DIN left / DIN right    |                | ■                         |
| Door types              | Rebated        | -                         |
|                         | Unrebated      | ■                         |
|                         | Wood           | ■                         |
|                         | Steel          | -                         |
|                         | Alu profile    | -                         |
| Loading capacity        |                | 120 kg / 3 pcs            |
| Finishes                |                | Stainless steel looking ■ |
| Material                | Base           | Zinc alloy                |
|                         | Connector      | Aluminum alloy            |
| 3D adjustable range     | Up and down    | ±3 mm                     |
|                         | Left and right | ±2 mm                     |
|                         | Front and back | ±1 mm                     |

■ Yes    - No    □ On request

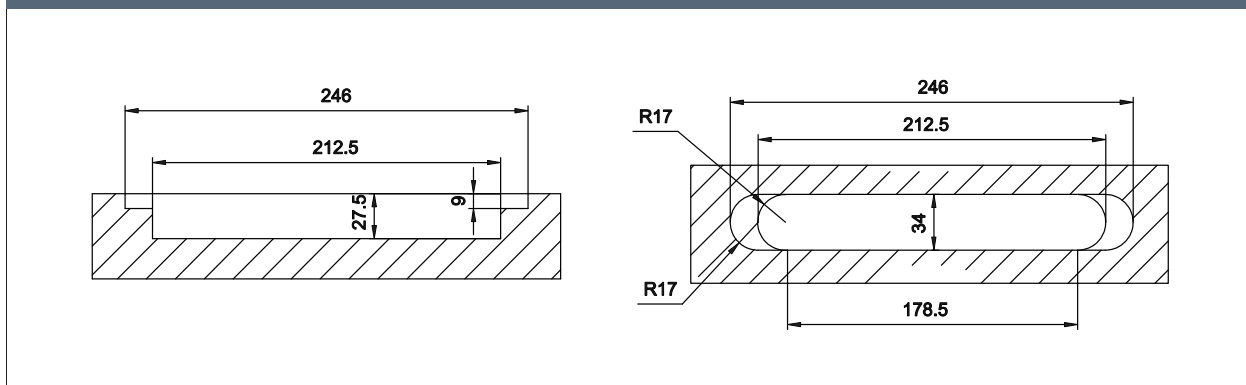
Dimension drawing



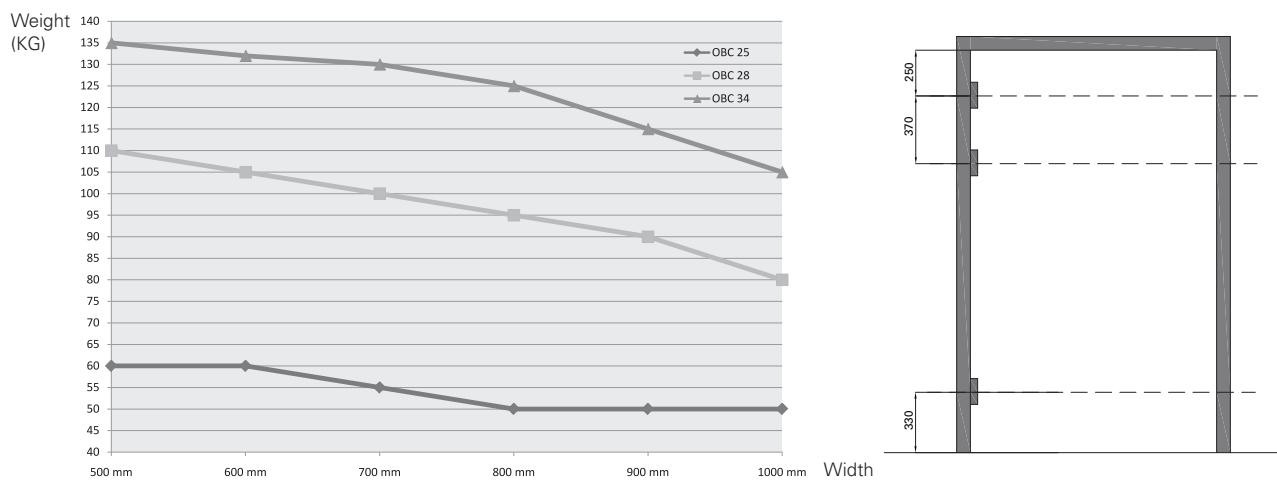
Mounting drawing



Trepanning drawing



Loading capacity in different applications:



Residential use only and without door closer. Fitting with door closer (w/o hold open or back check), 20% of loading capacity will be deducted by extra load from door closer.