

Hardware for glass door handles

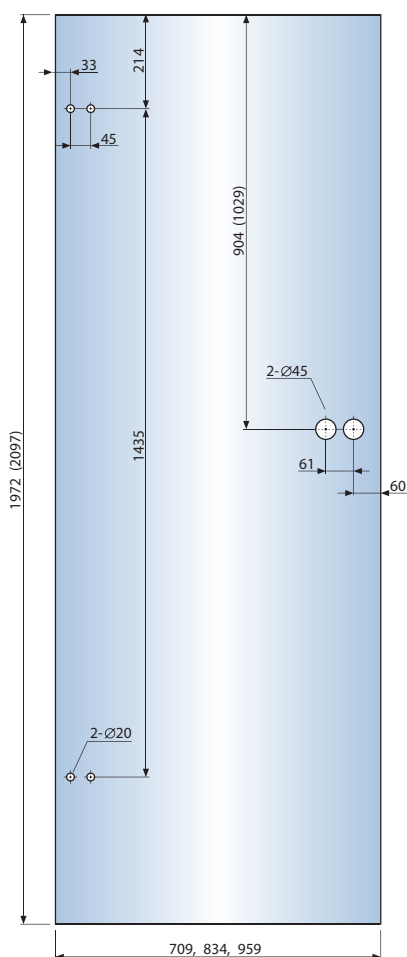
Holistic solutions



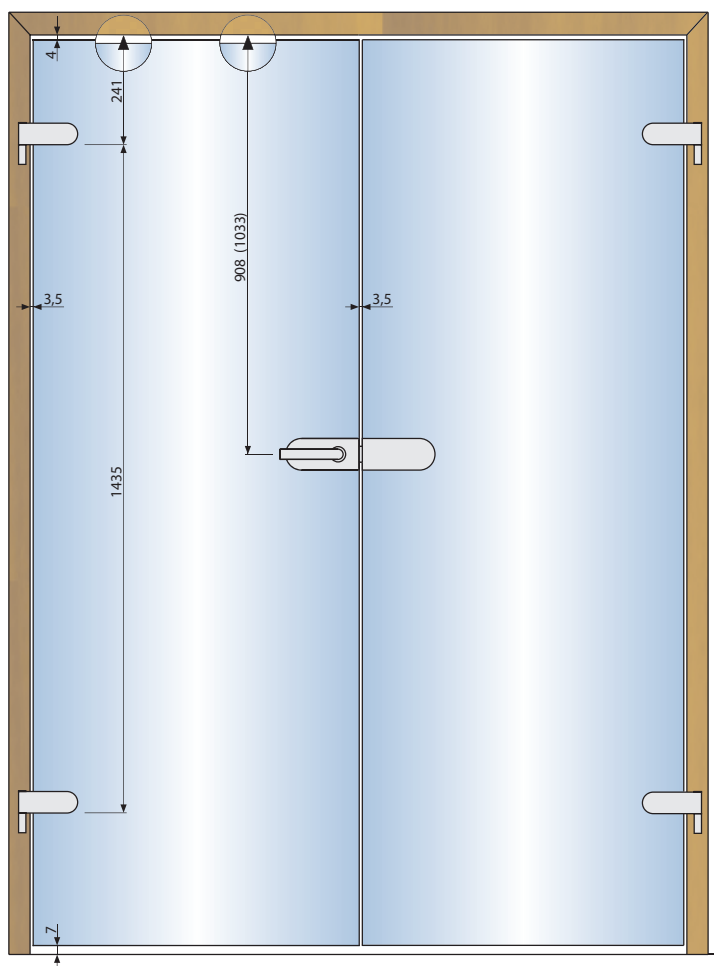


Locks, hinges and levers made of aluminium, zinc diecasting or stainless steel for the use in glass doors. Based on **DIN 18251** and **EN 1906**. They fulfill the requirements of holistic solutions with their form, construction and surface.

Glass working for two-part hinges and glass door locks

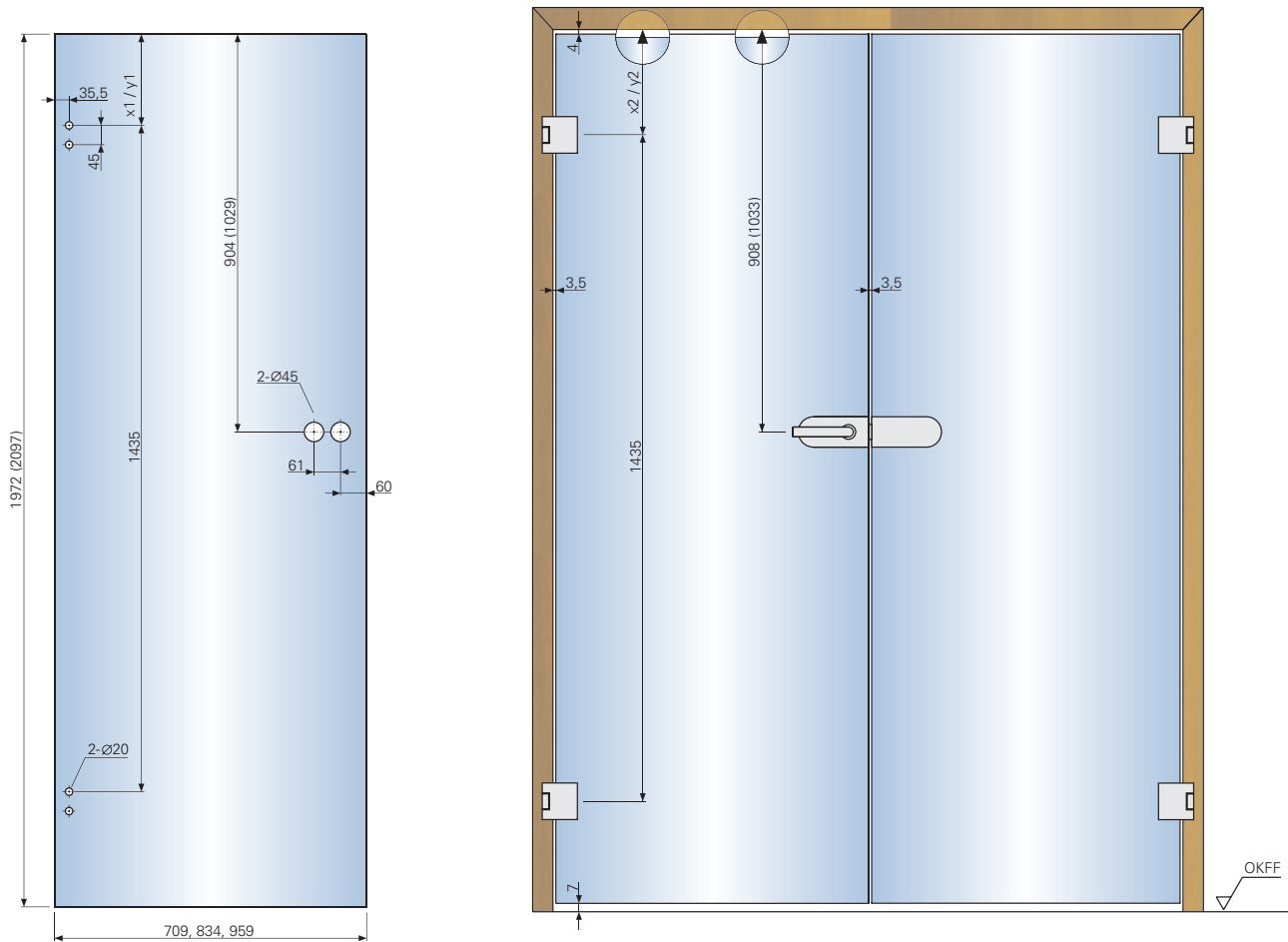


Note!
The illustration shows the glass working of a standard door leaf.



Note!
The illustration shows a glass door leaf using standard frames acc. to **DIN 18101**.

Glass working for three-part hinges and glass door locks



Note!
The illustration shows the glass working of a standard door leaf.

Note!
The illustration shows a glass door leaf using standard frames acc. to **DIN 18101**.

Note!
x1 = 232 mm / x 2 = 258,5 mm
For screw-on – frame part for upright standing pillar frame
For mortise – frame part and adjustable hinge box for timber frame
For mortise – frame part and adjustable hinge box for steel frame
y1 = 214,5 / y2 = 241
For OBX – frame part and adjustable hinge box for upright standing pillar frame
For OBX – frame part and adjustable hinge box for timber frame
For OBX – frame part and adjustable hinge box for steel frame
For OBX – frame part and adjustable hinge box for aluminium frame

Note!
For glass doors with more than 900mm width we recommend to use door hinges with frame parts in combination with reception elements "series OBX"

References

For years, ECO products have been used everywhere in the world where modern design, quality, reliability and security are important. The relation between design and architecture are especially applied to the glass sector. Only ECO system components in connection with a glass door create an architectural element that is used by our customers worldwide.



Millenium Tower Vienna

Glass door handles ■ Sets



Studio Basic Set
Page 640



Studio Design Set
Page 642



Studio Office Set
Page 644

Glass door handles ■ Locks



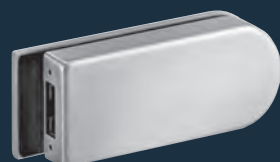
UV lock
Page 646



BB lock
Page 646

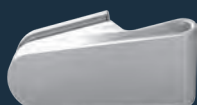


PZ lock
Page 646

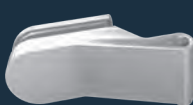


Counter lock
Page 647

Glass door handles ■ Hinges



Studio Basic hinge AL / ER
Page 648



Studio Design hinge AL / ER
Page 648

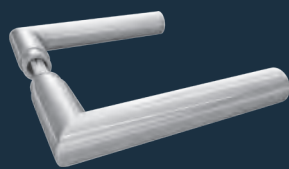


Studio Office hinge AL / ER
Page 648

Glass door handles ■ Lever sets



D-110
U-Form
Page 654



D-310
CL-Form
Page 654



D-410
U-Form Design
Page 654

Glass door handles ■ Glass door patch handles



GF-0100 - GF-0500
Page 656

Glass door handles ■ Accessories

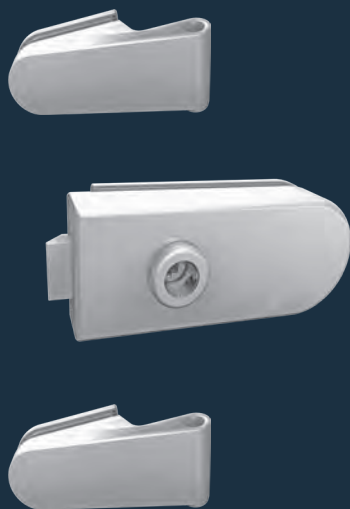


Glass clamping device
Page 658



Frame parts, three-part
Page 659

Studio Basic Set



Product characteristics

Glass (toughened safety glass)		8 (10) mm
Notch depth		24 (26) mm
Same version DIN left and DIN right		■
Single-turn / 18 mm bolt projection		■
Tested on the basis of DIN 18251 , class 3		DIN 18 251
Available lever sets	ECO	■
	Other	■
Follower	8 mm	■
Lever neck	16 mm	■
	18 mm	■
For door weights up to max.	45 kg	■
	55 kg	-
For door widths up to max.	1.000 mm	■
Finishes	Aluminium stainless steel look satin	■
	Aluminium F1 silver anodized	■
Locking mode	UV	■
	BB	■
	PZ	■

■ Yes - No □ On request

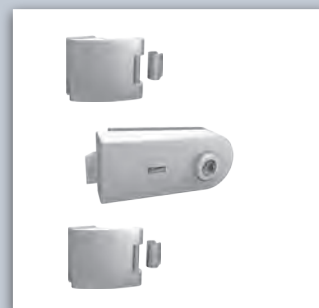
PRODUCT GROUP



Studio-Basic

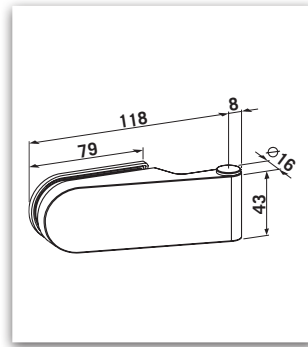
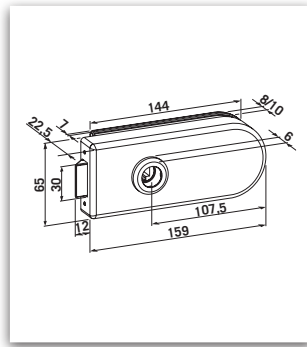


Studio-Design

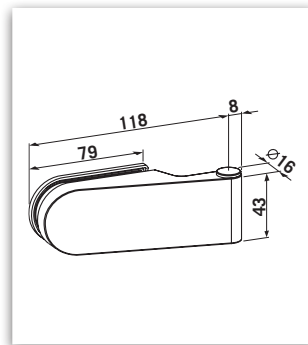
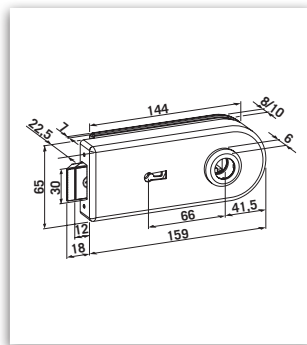


Studio-Office

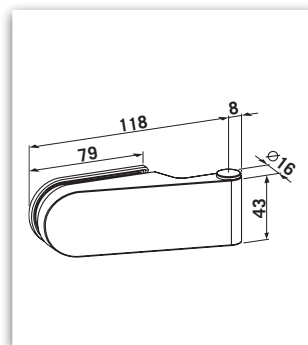
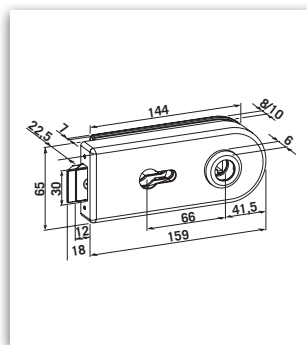
Glass door handles ■ Studio Basic Set



Door hardware set UV lock lever position in front	Article number	Description	Material
Studio Basic.Set. UV.ER	900.46	1 UV lock + 2 straight hinges (2-part)	Stainless steel look, satin
Studio Basic.Set. UV.AI	900.30	1 UV lock + 2 straight hinges (2-part)	Aluminim F1

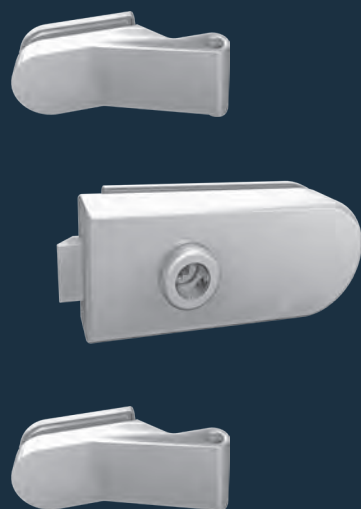


Door hardware set BB lock lever position in back	Article number	Description	Material
Studio Basic.Set. BB.ER	901.46	1 BB lock + 2 straight hinges (2-part)	Stainless steel look, satin
Studio Basic.Set. BB.AI	901.30	1 BB lock + 2 straight hinges (2-part)	Aluminim F1



Door hardware set PZ lock lever position in back	Article number	Description	Material
Studio Basic.Set. PZ.ER	902.46	1 PZ lock + 2 straight hinges (2-part)	Stainless steel look, satin
Studio Basic.Set. PZ.AI	902.30	1 PZ lock + 2 straight hinges (2-part)	Aluminim F1

Studio Design Set



Product characteristics

Glass (toughened safety glass)		8 (10) mm
Notch depth		24 (26) mm
Same version DIN left and DIN right		■
Single-turn / 18 mm bolt projection		■
Tested on the basis of DIN 18251 , class 3		DIN 18 251
Lever sets	ECO	■
	Other	■
Follower	8 mm	■
Lever neck	16 mm	■
	18 mm	■
For door weights up to max.	45 kg	■
	55 kg	-
For door widths up to max.	1.000 mm	■
Finishes	Aluminium stainless steel look satin	■
	Aluminium F1 silver anodized	■
Locking mode	UV	■
	BB	■
	PZ	■

■ Yes - No □ On request

PRODUCT GROUP



Studio-Basic

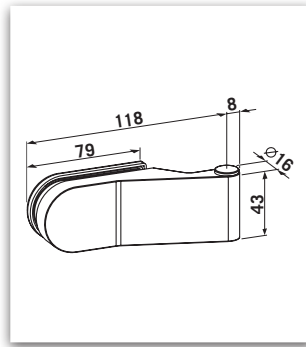
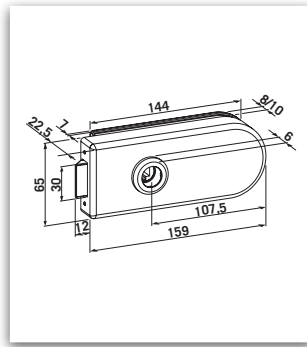


Studio-Design

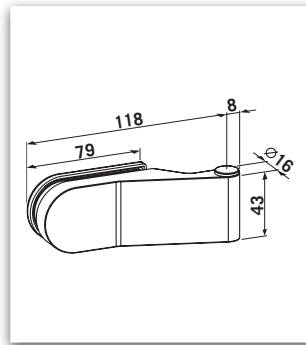
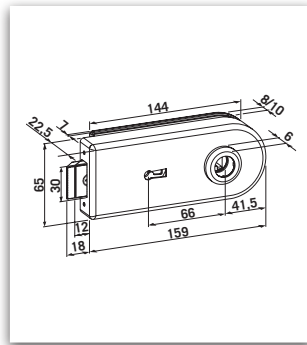


Studio-Office

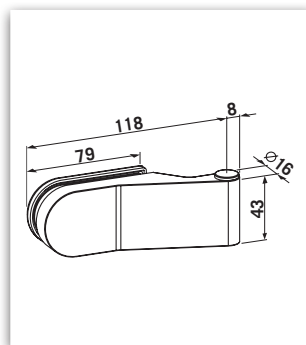
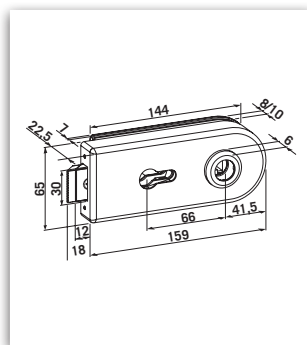
Glass door handles ■ Studio Design Set



Door hardware set UV lock lever position in front	Article number	Description	Material
Studio Design.Set. UV.ER	910.46	1 UV lock + 2 cranked hinges (2-part)	Stainless steel look, satin
Studio Design.Set. UV.AI	910.30	1 UV lock + 2 cranked hinges (2-part)	Aluminim F1

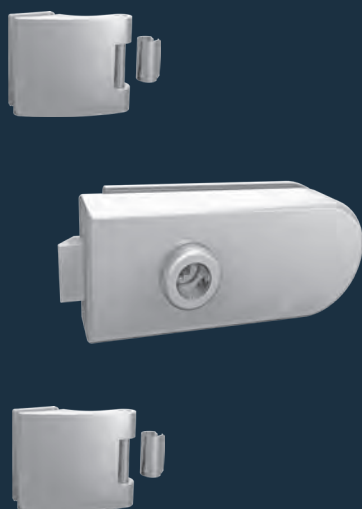


Door hardware set BB lock lever position in back	Article number	Description	Material
Studio Design.Set. BB.ER	911.46	1 BB lock + 2 cranked hinges (2-part)	Stainless steel look, satin
Studio Design.Set. BB.AI	911.30	1 BB lock + 2 cranked hinges (2-part)	Aluminim F1



Door hardware set PZ lock lever position in back	Article number	Description	Material
Studio Design.Set. PZ.ER	912.46	1 PZ lock + 2 cranked hinges (2-part)	Stainless steel look, satin
Studio Design.Set. PZ.AI	912.30	1 PZ lock + 2 cranked hinges (2-part)	Aluminim F1

Studio Office Set



Product characteristics

Glass (toughened safety glass)		8 (10) mm
Notch depth		24 (26) mm
Same version DIN left and DIN right		■
Single-turn / 18 mm bolt projection		■
Tested on the basis of DIN 18251, class 3		DIN 18 251
Lever sets	ECO	■
	Other	■
Follower	8 mm	■
Lever neck	16 mm	■
	18 mm	■
For door weights up to max.	45 kg	-
	55 kg	■
For door widths up to max.	1.000 mm	■
Finishes	Aluminium stainless steel look satin	■
	Aluminium F1 silver anodized	■
Locking mode	UV	■
	BB	■
	PZ	■

■ Yes - No □ On request

PRODUCT GROUP



Studio-Basic



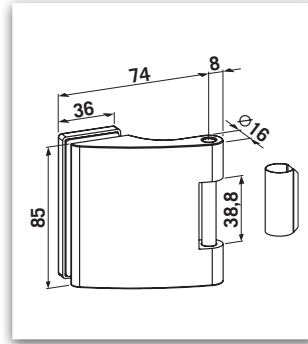
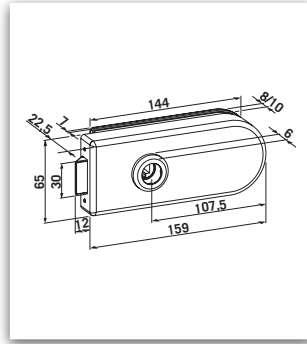
Studio-Design



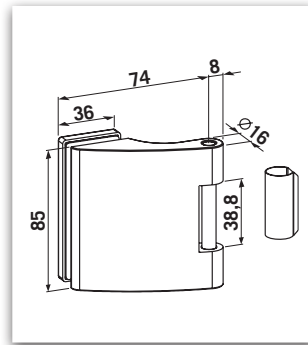
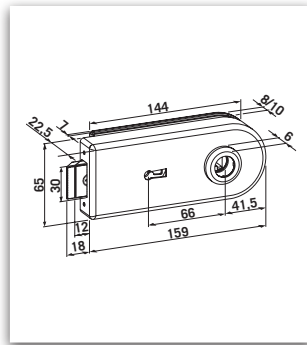
Studio-Office

Note!:
For glass doors with more than 900 mm width we recommend to use door hinges with frame parts in combination with reception elements "series OBX"

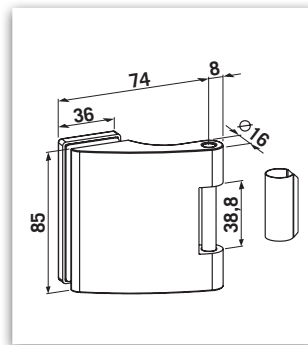
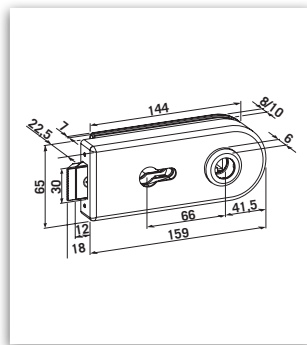




Door hardware set UV lock lever position in front	Article number	Description	Material
Studio Office.Set. UV.ER	904.46	1 UV lock + 2 hinges (3-part)	Stainless steel look, satin
Studio Office.Set. UV.AI	904.30	1 UV lock + 2 hinges (3-part)	Aluminim F1



Door hardware set BB lock lever position in back	Article number	Description	Material
Studio Office.Set. BB.ER	905.46	1 BB lock + 2 hinges (3-part)	Stainless steel look, satin
Studio Office.Set. BB.AI	905.30	1 BB lock + 2 hinges (3-part)	Aluminium F1



Door hardware set PZ lock lever position in back	Article number	Description	Material
Studio Office.Set. PZ.ER	906.46	1 PZ lock + 2 hinges (3-part)	Stainless steel look, satin
Studio Office.Set. PZ.AI	906.30	1 PZ lock + 2 hinges (3-part)	Aluminim F1

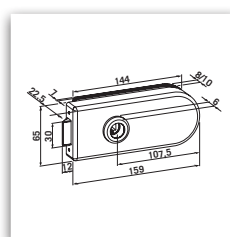


Locks made of stainless steel or aluminium with fixing material · without lever

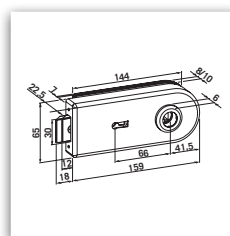
- Suitable for 8 - 10 mm glass (toughened safety glass)
- Same version DIN left and DIN right
- Single-turn / 18 mm bolt projection
- Tested on the basis of **DIN 18251**, class 3
- Can be combined with all ECO as well as standard levers without escutcheon, with 8 mm follower and Ø 16 mm and Ø 18 mm lever neck

Finishes

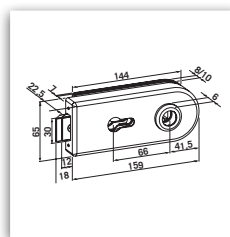
- Stainless steel
- Aluminium F1 silver anodized



UV-lock lever position in front	Article Number	Description	Material
Studio lock.UV.ER	920.46	Glass door lock UV · without lever	Stainless steel
Studio lock.UV.AI	920.30	Glass door lock UV · without lever	Aluminium F1 silver anodized



BB lock lever position back	Article number	Description	Material
Studio lock.BB.ER	921.46	Glass door lock BB · without lever	Stainless steel
Studio lock.BB.AI	921.30	Glass door lock BB · without lever	Aluminium F1 silver anodized



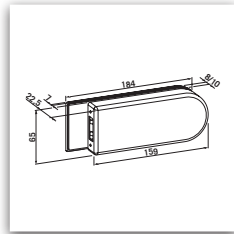
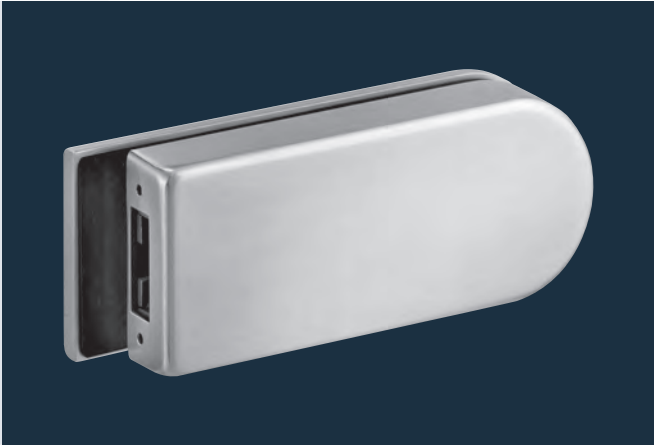
PZ lock lever position back	Article number	Description	Material
Studio lock.PZ.ER	922.46	Glass door lock PZ · without lever	Stainless steel
Studio lock.PZ.AI	922.30	Glass door lock PZ · without lever	Aluminium F1 silver anodized

Counter locks for passive leaf made of stainless steel or aluminium for glass doors with fixing material

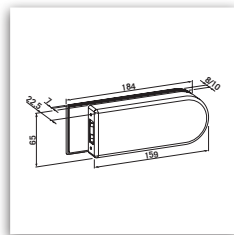
- Suitable for 8 - 10 mm glass (toughened safety glass)
- Same version DIN left and DIN right

Finishes

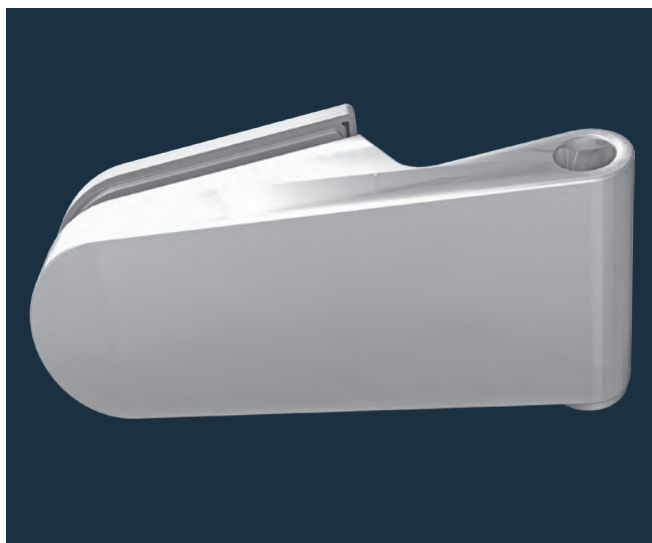
- Stainless steel
- Aluminium F1 silver anodized



Counter lock	Article number	Description	Material
Counter lock.ER	970.46	Counter lock	Stainless steel



Counter lock	Article number	Description	Material
Counter lock.AI	970.30	Counter lock	Aluminium F1

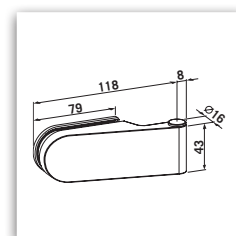


Door hinges made of aluminium, or zinc diecasting for glass doors with fixing material

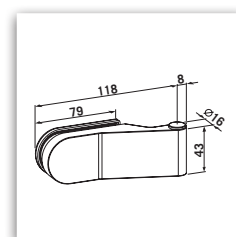
- Same version DIN left and DIN right
- Suitable for 8 mm - 10 mm (toughened safety glass)
- Notch depth for two-part hinge = 24 mm at 8 mm, 26 mm at 10 mm glass
- Notch depth for three-part hinge = 24 mm at 8 mm, 26 mm at 10 mm glass
- Stainless steel screws M6
- Can be combined with standard frame parts
- Installation in frames acc. **DIN 18101 / 18111**
- For door weights up to max. 45 kg with Studio Basic
For door weights up to max. 55 kg with Studio Office
- For door widths up to max. 1.000 mm

Finishes:

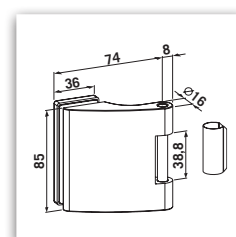
- Stainless steel look, satin
- Aluminium F1 silver anodized



Studio-Basic	Article Number	Description	Material
Studio Basic.Hinge.ER	990.46	2 Studio-hinges, straight (2-part)	Stainless steel look, satin
Studio Basic.Hinge.AI	990.30	2 Studio-hinges, straight (2-part)	Aluminium F1 silver anodized



Studio-Design	Article Number	Description	Material
Studio Design.Hinge.ER	020.46	2 Studio-hinges, cranked (2-part)	Stainless steel look, satin
Studio Design.Hinge.AI	020.30	2 Studio-hinges, cranked (2-part)	Aluminium F1 silver anodized



Studio-Office	Article Number	Description	Material
Studio Office.Hinge.ER	980.46	1 hinge (3-part)	Stainless steel look, satin
Studio Office.Hinge.AI	980.30	1 hinge (3-part)	Aluminium F1 silver anodized



ECO Glass door systems

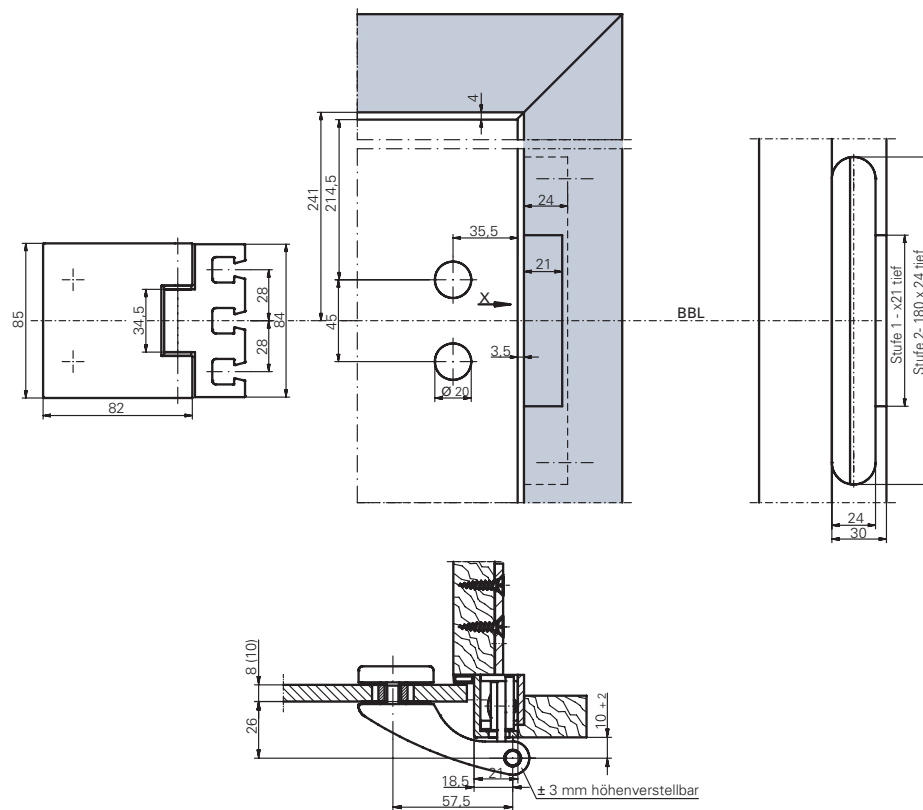
Holistic solutions.

The single components in different executions and finishes offer you system technology for the glass door also in high-end quality: locks, hinges and levers made of aluminium, zinc-diecasting or stainless steel for the use on glass doors based on **DIN 18251** and **EN 1906**. With their form, construction and surface they comply with the holistic solutions of ECO's door hardware.

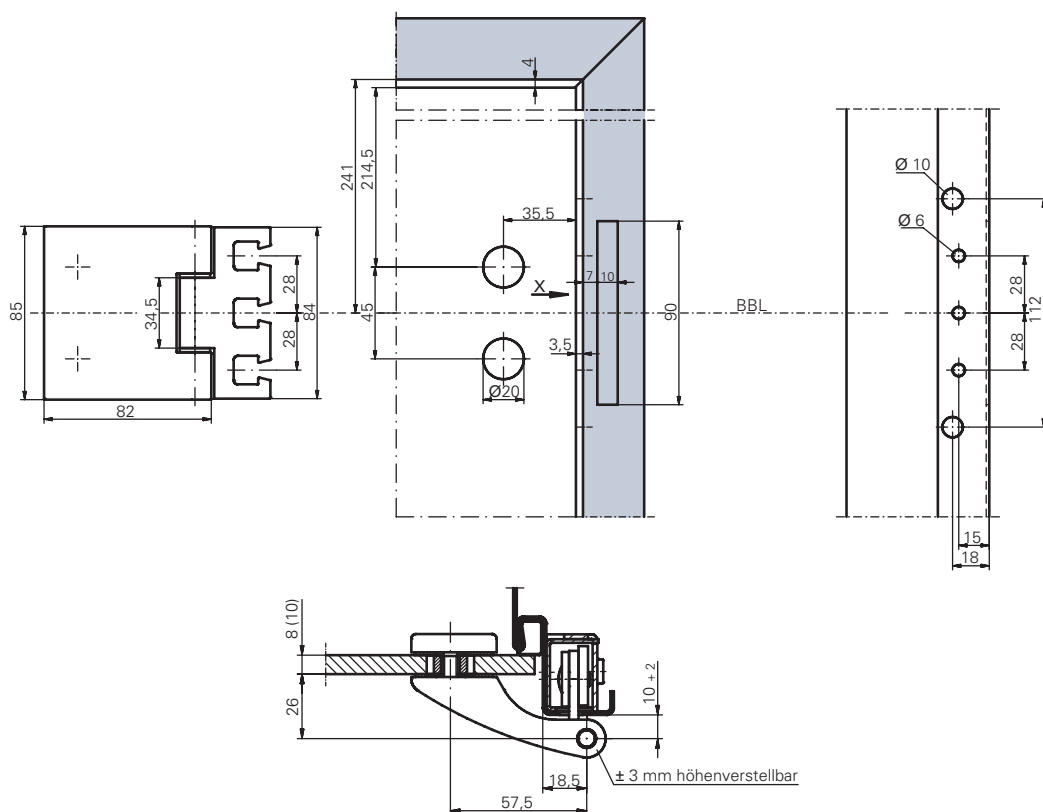
The complete programme of glass door handles has been well thought through. It is completed by hinges, handle sets & lock combinations as well as door closers and floor springs.

Assembly situation

with OBX frame part and adjustable hinge box



For timber frames



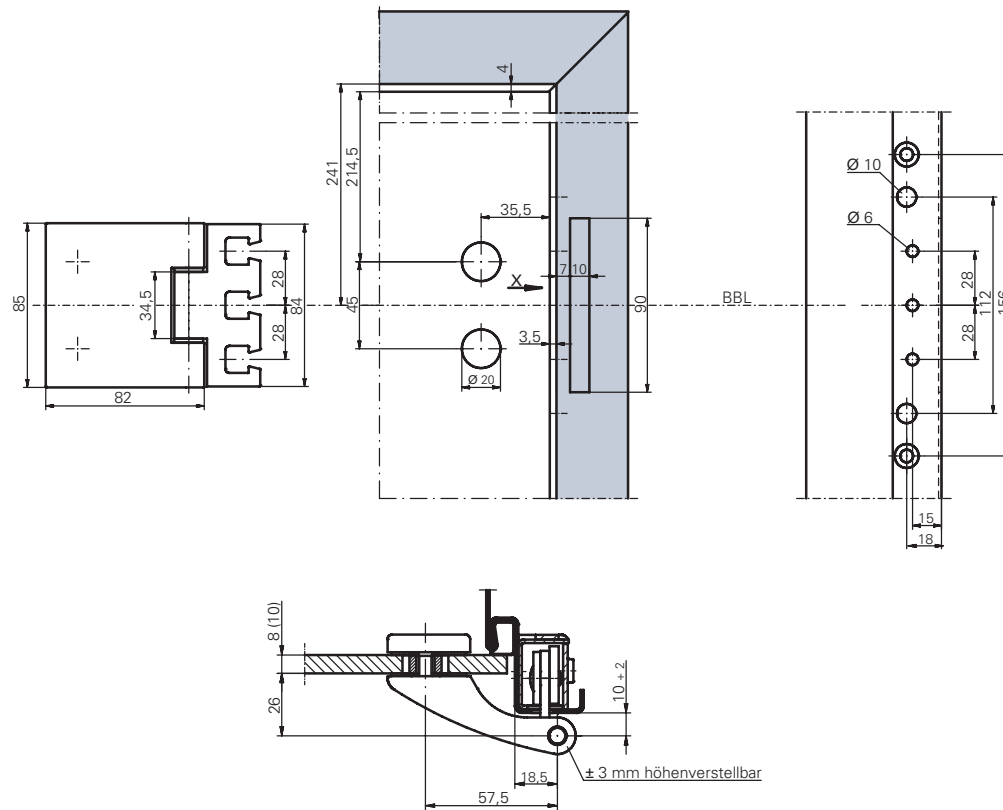
For steel frames



ECO

Assembly situation

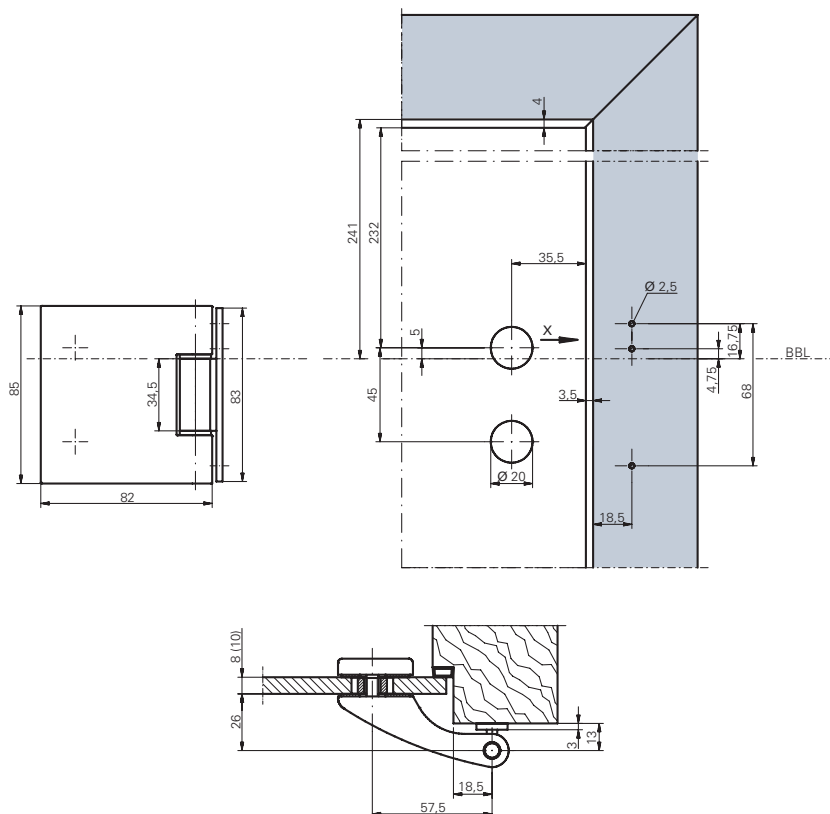
with OBX frame part and adjustable hinge box



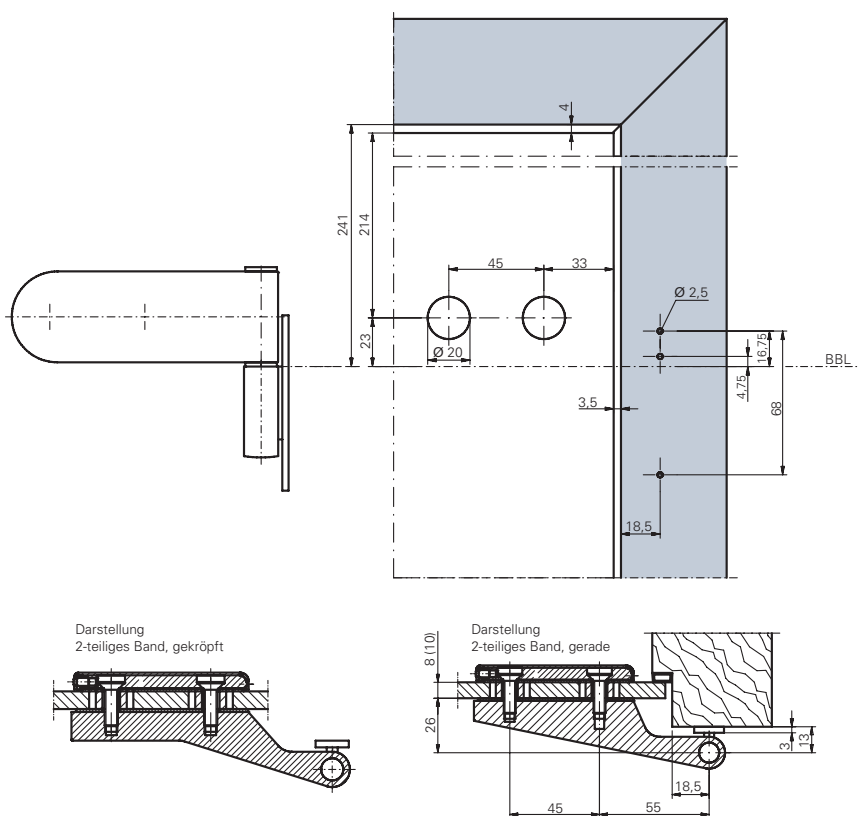
For aluminium frames

Assembly situation

Frame part to be screwed on



For upright standing pillar frame



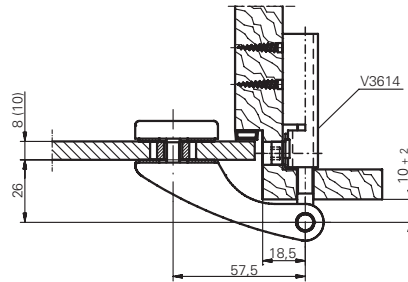
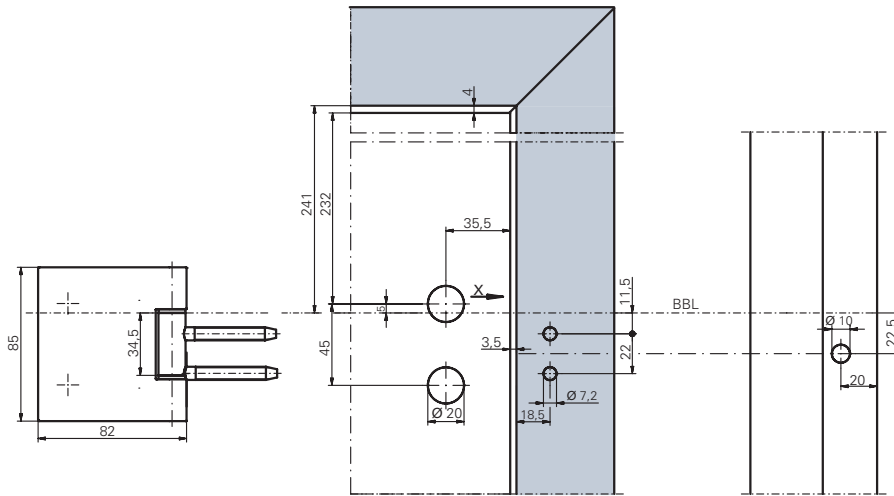
For upright standing pillar frame (2-part hinge)



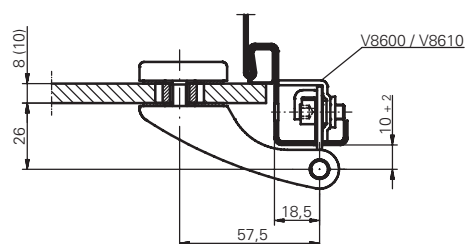
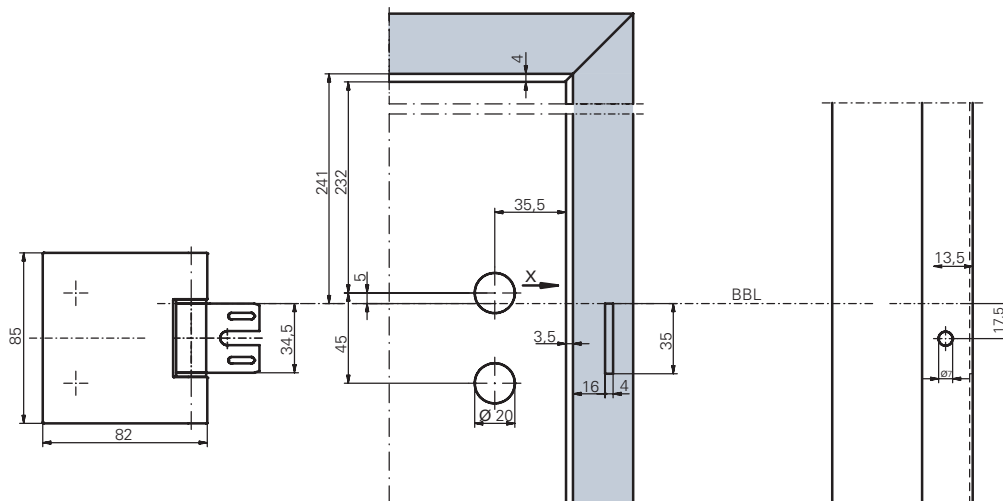
ECO

Assembly situation

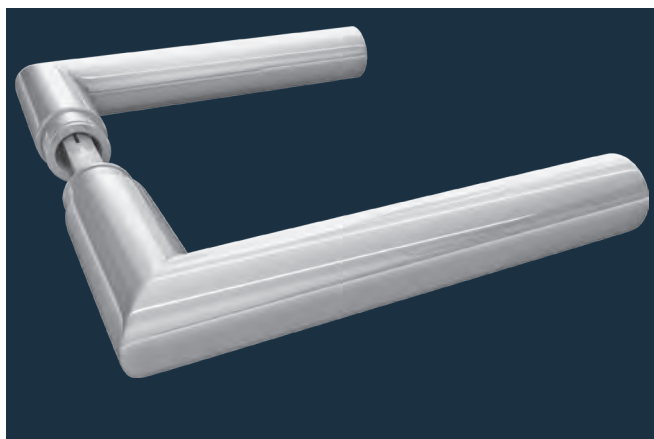
Frame part to be mounted in



For timber frames



For steel frames

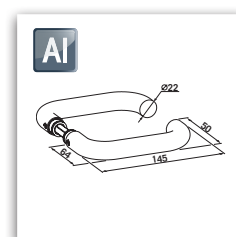
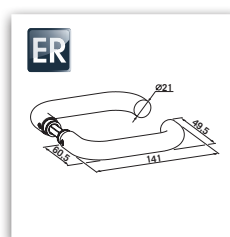


Levers made of aluminium or stainless steel for glass doors with fixing material · without lever

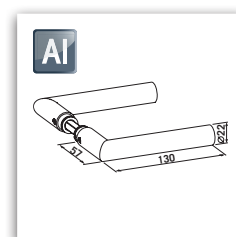
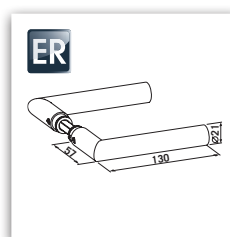
- Suitable for 8 - 10 mm glass (toughened safety glass)
- Same version DIN left and DIN right
- Tested on the basis of **DIN 18251, class 3**
- Can be combined with all ECO as well as standard levers without escutcheon, with 8 mm follower and Ø 16 mm and Ø 18 mm lever neck

Finishes

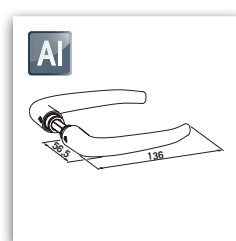
- Stainless steel
- Aluminium F1 silver anodized



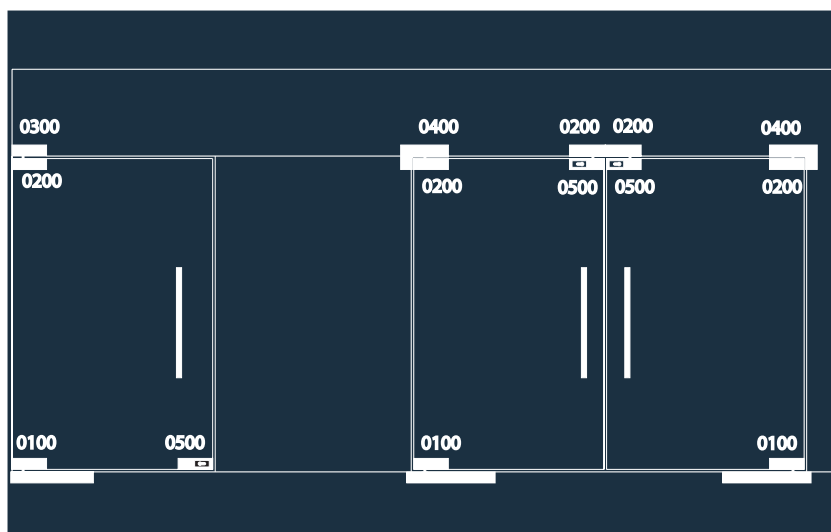
D-110 U-Form	Article Number	Description	Material
Studio D-110.ER	006.46	Lever set D-110.ER without escutcheon	Stainless steel
Studio D-110.AI	006.30	Lever set D-110.AL without escutcheon	Aluminium F1 silver anodized



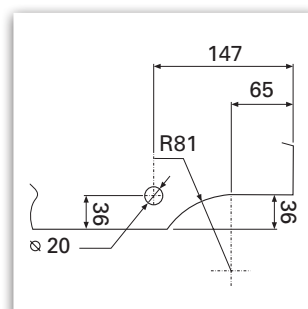
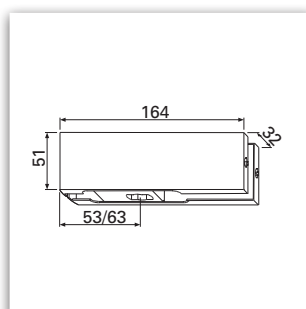
D-310 CL-Form	Article Number	Description	Material
Studio D-310.ER	010.46	Lever set D-310.ER without escutcheon	Stainless steel
Studio D-310.AI	010.30	Lever set D-310.AL without escutcheon	Aluminium F1 silver anodized



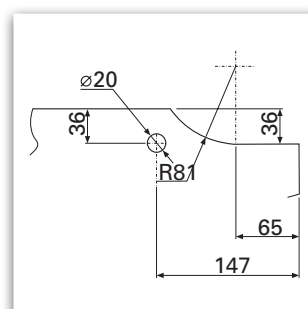
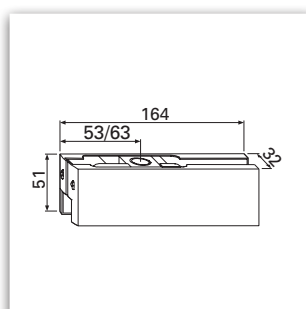
D-410 U-Form, Design	Article Number	Description	Material
Studio D-410.ER	008.46	Lever set D-410.ER without escutcheon	Stainless steel
Studio D-410.AL	008.30	Lever set D-410.AL without escutcheon	Aluminium F1 silver anodized



- Suitable for 8 · 10 · 12 mm glass (toughened safety glass)
- Material: Stainless steel
- Finishes: Stainless steel satin or polished
- Maximum door weight 80 kg
- Maximum door width 1.100 mm

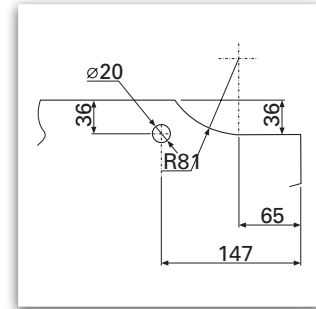
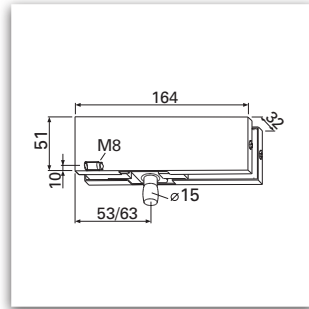


GF-0100 Bottom patch	Article Number	Description	Surface
GF-0100 S	801.46	Bottom corner fitting with reception for floor spring axis	Stainless steel satin
GF-0100 P	801.47	Bottom corner fitting with reception for floor spring axis	Stainless steel polished

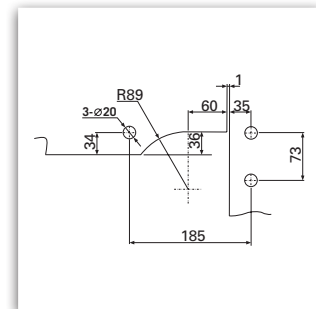
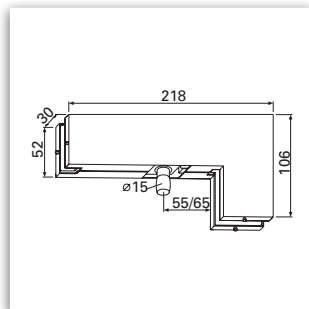


GF-0200 Top patch	Article Number	Description	Surface
GF-0200 S	802.46	Top corner fitting with plastic bushing for pin	Stainless steel satin
GF-0200 P	802.47	Top corner fitting with plastic bushing for pin	Stainless steel polished

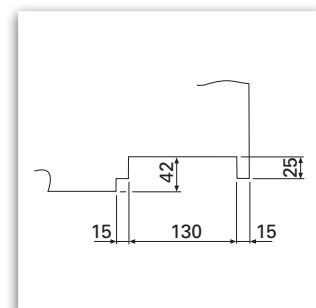
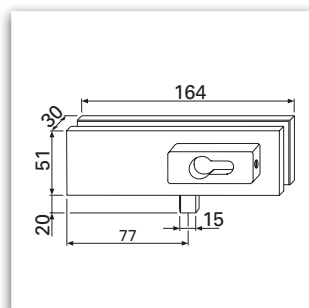
Glass door handles ■ Glass door patch handles for solid glass doors



GF-0300 Overpanel patch	Article Number	Description	Surface
GF-0300 S	803.46	Overpanel patch with pin	Stainless steel satin
GF-0300 P	803.47	Overpanel patch with pin	Stainless steel polished



GF-0400 Overpanel patch	Article Number	Description	Surface
GF-0400 S	804.46	Overpanel & side patch with pin	Stainless steel satin
GF-0400 P	804.47	Overpanel & side patch with pin	Stainless steel polished



GF-0500 Patch lock	Article Number	Description	Surface
GF-0500 S	805.46	Corner lock with lock	Stainless steel satin
GF-0500 P	805.47	Corner lock with lock	Stainless steel polished



Glass clamping device for ECO door closer **Newton TS-51**

Clamping device made of aluminium for fixing an ECO door closer onto a glass door

- Suitable for 8 - 10 mm glass (toughened safety glass)
- Same version DIN left and DIN right
- Including threaded holes for the door closer
- Aluminium: colours see table below

Description of the door closer please refer to chapter 2

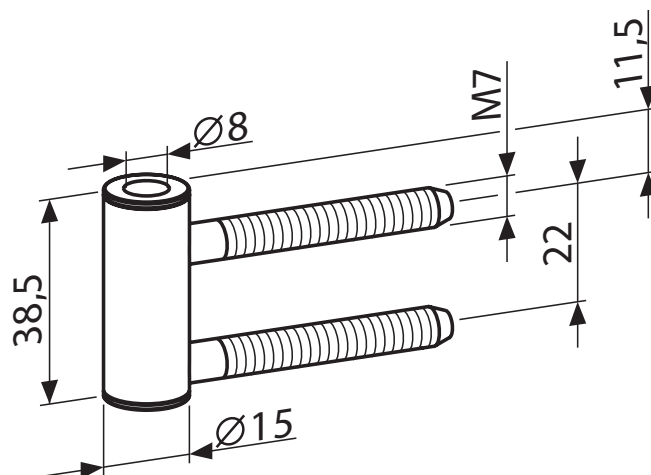


Glass clamping device	Article Number	Description	Material / Color
Glass clamping device.AI	350310600A00000	for door closer Newton TS-51	Al F1 coated
Glass clamping device.AI	350310600E00000	for door closer Newton TS-51	Al white RAL 9016 coated
Glass clamping device.AI	350310600D00000	for door closer Newton TS-51	Al brown RAL 8014 coated
Glass clamping device.AI	350310600Q00000	for door closer Newton TS-51	Al stainless steel look

Frame part for three-part glass door hinges
ECO Studio Office

- Frame part for reception in wooden frames
- With nylon guidance socket
- Same version DIN left and DIN right
- Material: Steel zinc-plated

Studio-Basic/Studio-Design	Article Number	Material
1 frame part for wooden frame ECO Studio Office	10gla8104300112	Steel zinc-plated



ECO Glass door systems

Unique sense of space

Glass doors are the best possibility to create ideal lighting conditions. They create a bright and friendly atmosphere and an unique sense of space.

Glass door handles, hinges and locks with their slim form and their elegant design accentuate the special character and the transparency of glass doors.

They are a main stay of contemporary architecture.

ECO Schulte GmbH & Co. KG
Iserlohner Landstraße 89
D - 58706 Menden

Telefon: +49 2373/92 76 - 0
Fax: +49 2373/92 76 - 40

info@eco-schulte.de
www.eco-schulte.de

© ECO Schulte GmbH & Co. KG - Änderungen vorbehalten
© ECO Schulte GmbH & Co. KG - Subject to change