

# OBN 14

German engineering with no compromise.

■ SYSTEMTECHNOLOGY FOR THE DOOR



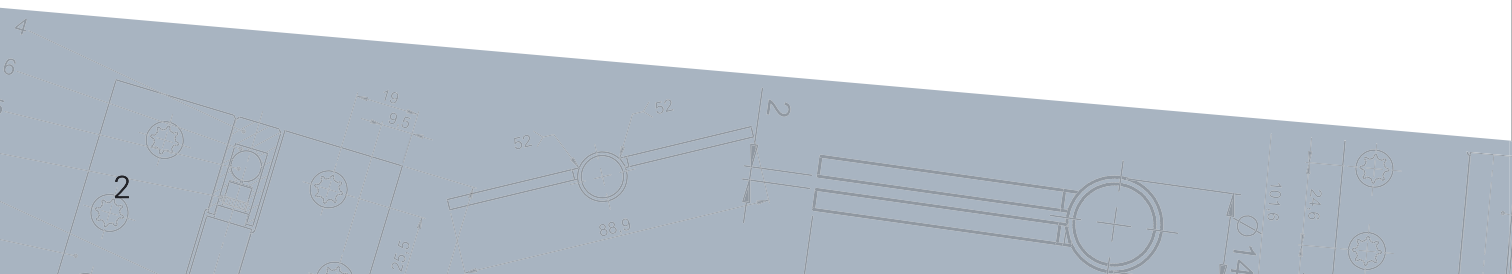
# “Big doors swing on little hinges.”

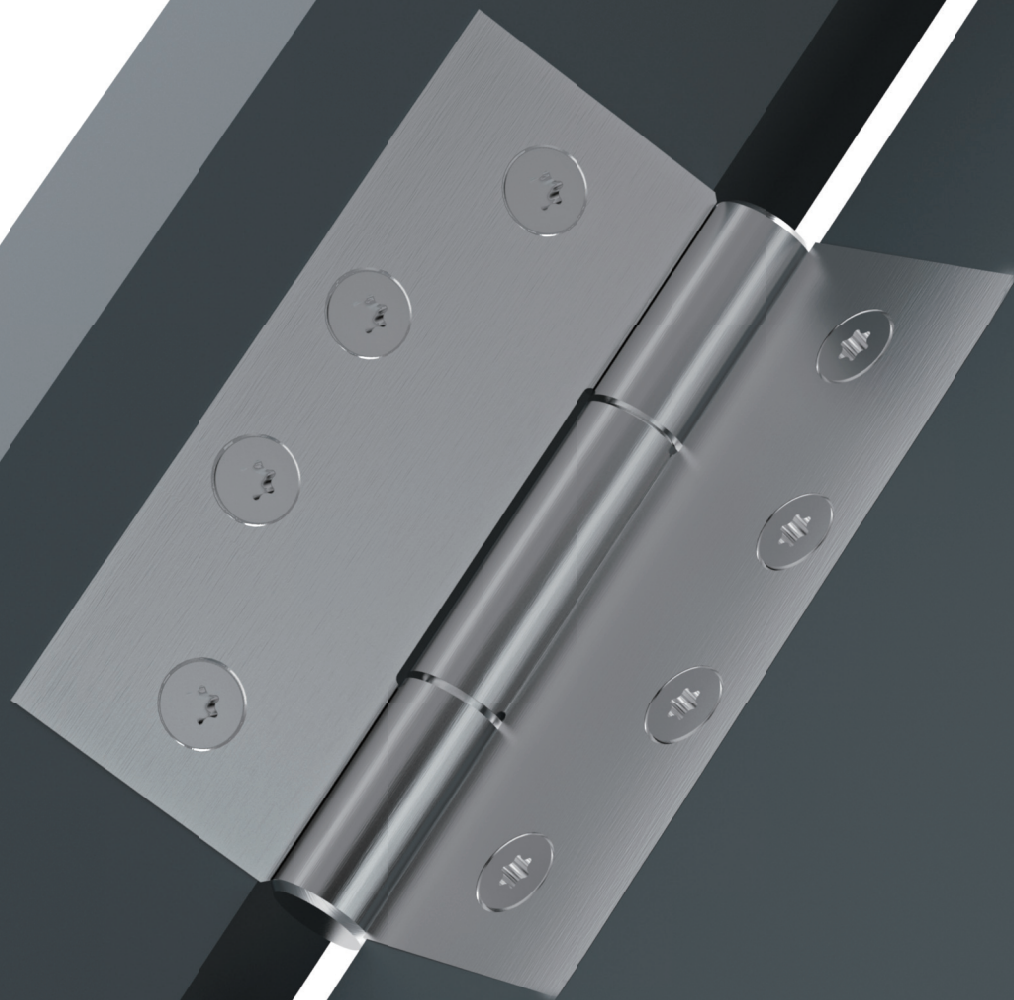
*W.Clement Stone*

In other words, little things can make a difference. Often we don't realise that it is the little things that make for an extraordinary performance. This applies to every area of life.

ECO Schulte took this quote literally. Doors accompany you throughout the day wherever you go. Everyone uses doors thousands of times a year. Most people only take note of the handles because it is the only item we touch. The hinges go largely unnoticed, but they are precisely what make the door work. They keep the door in the right position. The hinges support the door as it opens and closes millions of times without fail through its lifetime.

To make a safe door system that lasts, ECO Schulte has designed a little thing that makes a big difference — the new OBN 14 hinge series. The OBN 14 hinge combines the patented innovative ECO Schulte bearing technology with enticing, elegant design.



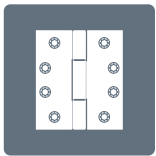


# Unique Design

In addition to quality and functionality, the ECO system also values great product design. Numerous product design and architecture awards attest to this. ECO's development of the OBN 14 series was no exception.

The OBN 14 series is made using innovative state of the art technology that lends the hinges a timeless and elegant design. This production technology allows us to go beyond the market standard and to redesign the hinge body entirely. The body's minimalistic design gives the hinge a clean, modern look.

The standard model is made with grade 304 stainless steel which means you can choose a surface treatment to match different interior design requirements.



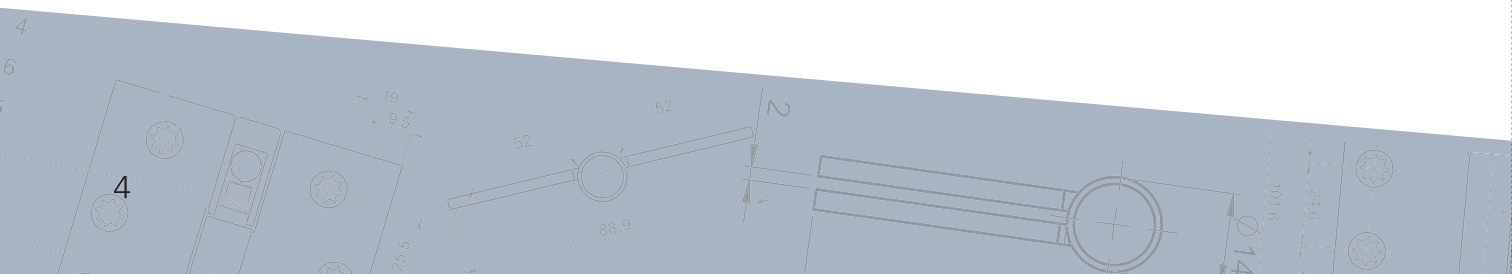
Compact unit



Minimalistic design



Individual finishes







# Innovative Technology

ECO Schulte has been using its patented ball bearing technology for many years. The OBN- and OBX-18/20 series products have a proven global track record thanks to their unfailing quality and functionality.

ECO Schulte has redesigned the bearings to fit into even smaller hinge bodies like the OBN 14. The maintenance-free ball-bearing ensures perfect door movement and a precision-engineered opening experience throughout its lifetime. Additionally, the concealed ball bearings are self-lubricating so that no oil or grease is used inside the hinge.

In addition to the standard hinge, a 2D adjustable hinge is available to adjust for installation tolerances and guarantee perfect door alignment.



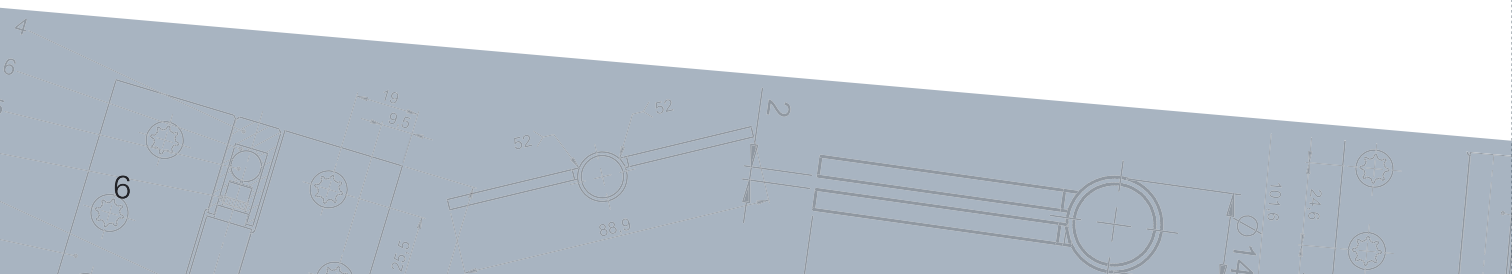
Ball bearing

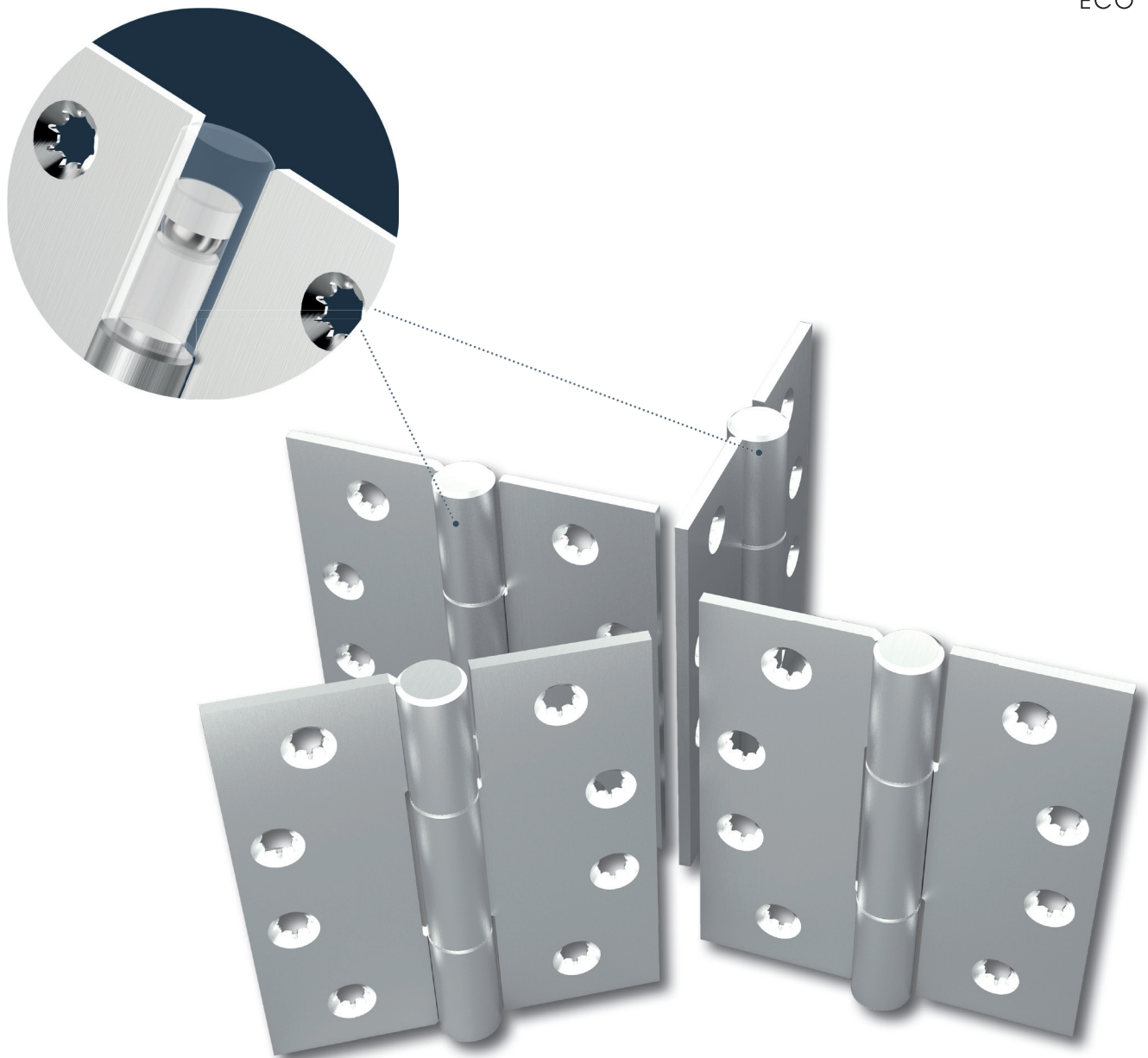


Oil-free



2D adjustable





# Nonstop Quality

ECO Schulte takes safety seriously. This is why OBN 14 hinges are certified to a number of international standards, including the European Standard (EN) and the American National Standards Institute (ANSI).

The hinges are categorised into different classes according to the EN 1935 standard. The OBN 14 fulfils the requirements of the highest class (14). This means that the hinge has been tested for load capacities up to 160 kg. EN 1935 sets the number of open-close cycles at 200,000.

The fire resistance of door hardware is defined in EN 1634. The OBN 14 has been tested on steel and timber doors for a duration of 120 minutes.

160 kg

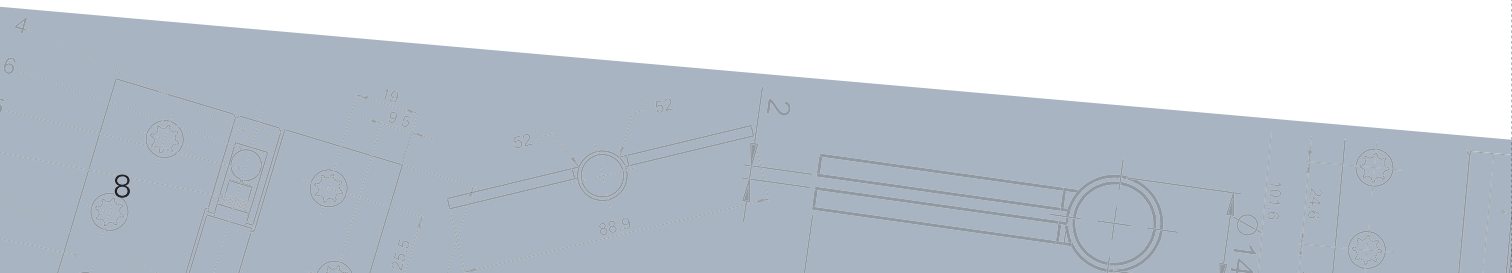
Load capacity



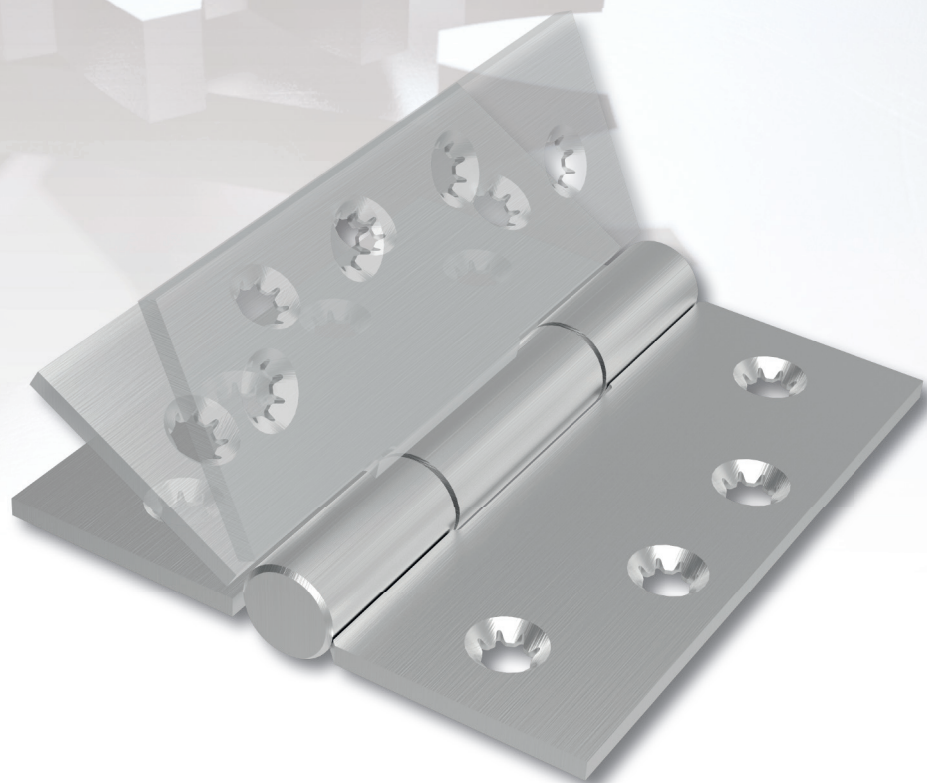
EN class 14



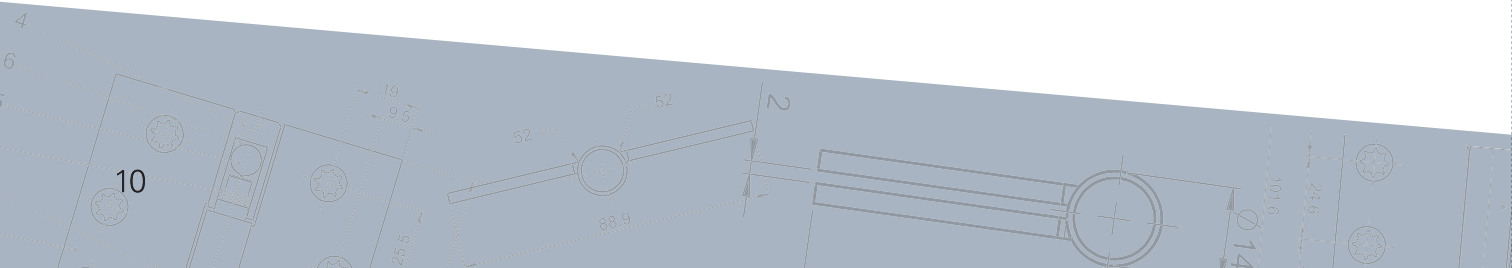
Fire rated







Product characteristics		
Size	in mm	in inches
	101 x 76	4 x 3
	101 x 89	4 x 3.5
	101 x 101	4 x 4
	114 x 101	4.5 x 4
	127 x 76	5 x 3
	127 x 101	5 x 4
Diameter	14 mm	
Thickness	3 mm	
Hole pattern	C-shape	
	Z-shape	
Door types	Timber	
	Steel	
	Profile	
Loading capacity (EN 1935 class 14) *		160 kg
*Two hinges per leaf (1m x 2m)		
Standards	<div>EN 1935</div> <div>CE</div>	
	ANSI/BHMA 156	
	<div>F</div>	
2D Adjustment	Optional	
Material	SUS 304	



## OBN-14-hinge

- Barrel diameter Ø14 mm, material thickness 3 mm, screws Ø5 mm
- For flush doors on timber, steel or aluminium frames
- Tested according to EN 1935 class 14
- Made of stainless steel (individual finishes on request)
- Concealed heavy duty ball bearing
- Suitable for fire doors

## OBN-14-hinge with adjustable frame box

- Adjustable in height and depth  $\pm 3.0$  mm
- Convenient height adjustment via eccentric
- Height and depth separately adjustable



## ■ SYSTEM TECHNOLOGY FOR THE DOOR

